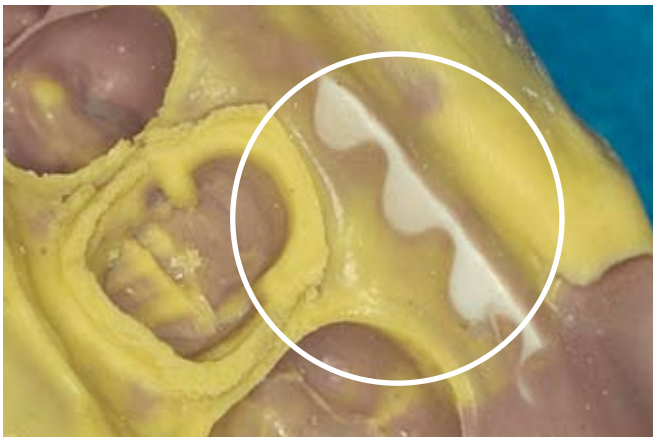


# Tray-Tooth Contact

**Visual Appearance:** Show-through of tray. Impression tray exposed.

**Result:** Restoration may have slight distortion at marginal area, or rocks.

CAUSE	SOLUTION
Prepared teeth contact the sides or bottom of impression tray.	Use proper size tray. Test various tray sizes to ensure proper size.
Tooth contact with the pre-set tray material when using the two-step technique.	Carve out tray material properly before applying wash.
Insufficient impression material used.	Fill tray adequately.



**Contact with Impression Tray**

**3M** ESPE

Making Better Impressions

Expertise™

*Trouble*

*Shooting*

*Guide*