

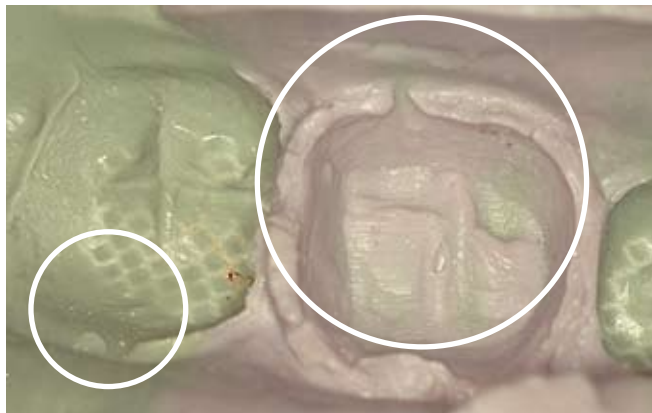
# Voids on the Margin

**Visual Appearance:** Voids/holes on margin of the prepared teeth. Incomplete margin.

**Result:** The fit and function of the final restoration may be compromised. Short crown margins and/or open margins.

CAUSE	SOLUTION
Air trapped in intraoral syringe.	Properly bleed filled elastomer syringe.  Keep tip immersed in material when loading syringe.  Do not stop when in the middle of loading syringe.
Air trapped while filling impression tray.	Keep mix tip immersed in tray material while filling the tray.
Improper syringe technique.	Keep syringe tip immersed in wash material to avoid entrapping air.  Wiggle and stir while syringing. Push material forward.
Inadequate coverage of marginal area with light body impression material.	Use wash material liberally on preparation and abutments.

*Continued*



**Void Caused by Syringe Technique**

## CAUSE

Blood and saliva contamination around prep.

## SOLUTION

Use good moisture control technique. Rinse and dry prep area before taking the impression.

Stop bleeding by using appropriate retraction technique and hemostatic agent. Leave cord in sulcus until no blood or saliva are present before syringing the light body impression material. Consider two-cord retraction to displace tissue and control fluids.

Tray not seated straight.

Insert impression tray straight.

Ensure that correct centric bite is attained when using dual arch impression trays.

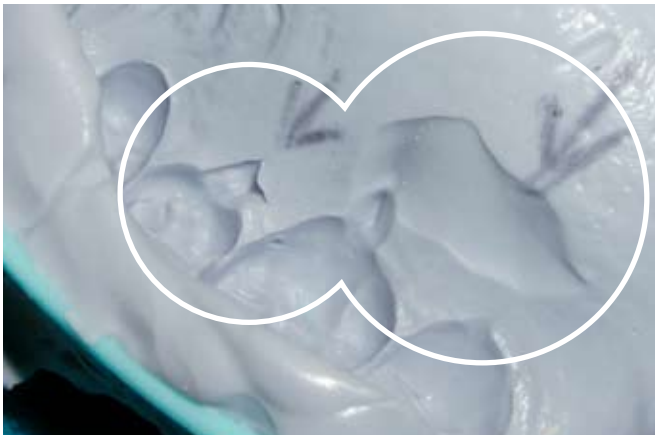
Exceeding the working time.

Follow manufacturer's working time specifications.

Choose material with longer working time.

Impression material stored at elevated temperature.

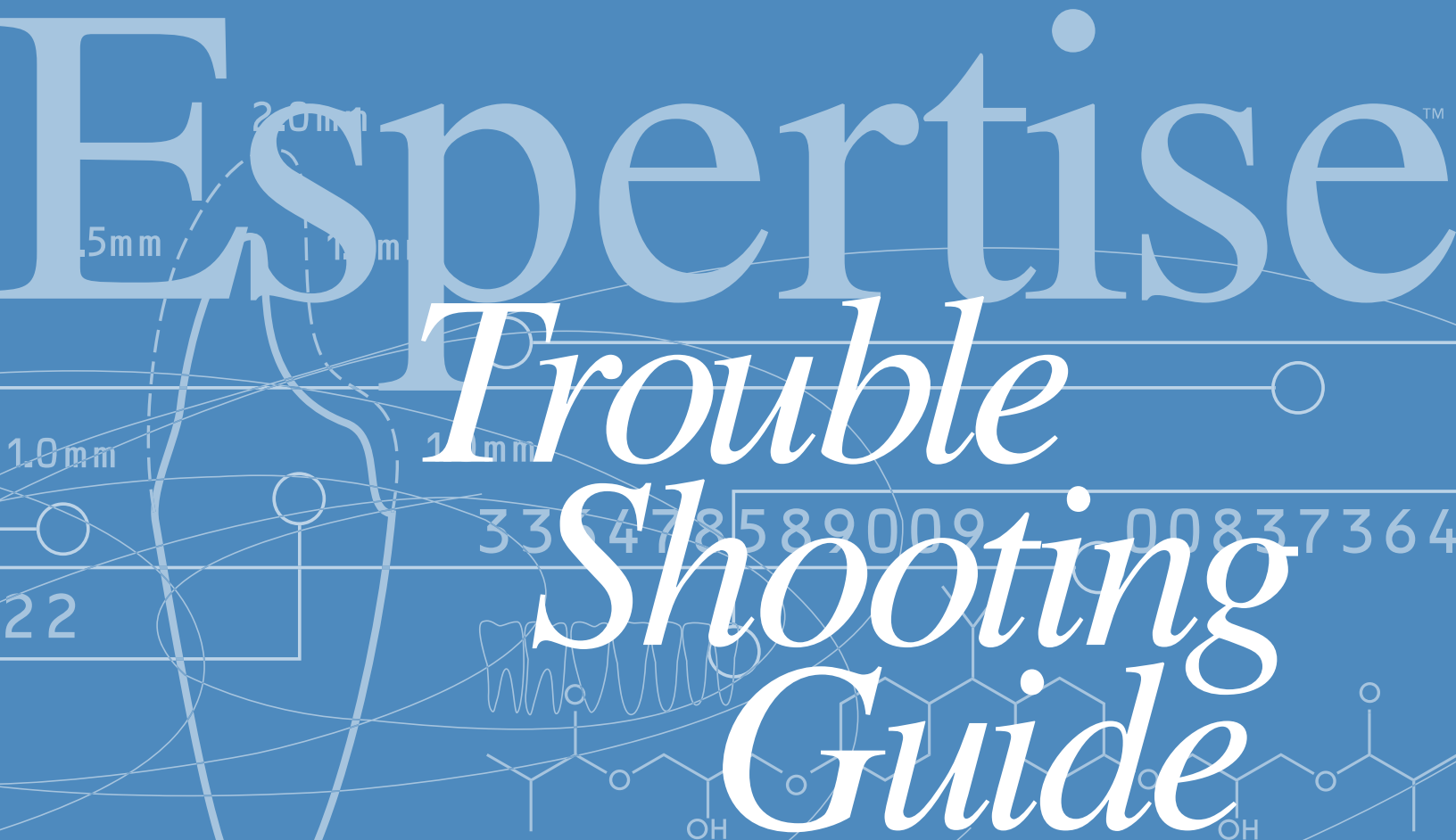
Store impression material at room temperature.



Trapped Air or Moisture

**3M** ESPE

Making Better Impressions



**Expertise**<sup>TM</sup>  
*Trouble  
Shooting  
Guide*